

# RDT SIM

Radar Demonstration & Testing simulation.

Radar manufacturing companies can make use of the software & specialised radar interface card, to run real marine radar equipment.

The radar interface card simulates a radar antenna, generating video, trigger azimuth signals, and connects directly to the radar processor unit. The radar can then be tested to IEC62388 testing standards, with supplied scenarios, or be used for demonstration, at exhibitions etc.

Many different radar coastlines are available.

Types of radar already running RTDsim :-

**Sperry - Kelvin Hughes - Raytheon - JRC  
Furuno - SAM - Selesmar.**



**Kelvin Hughes** - Manta radar display.

# PORTABLE SIMULATORS

Smaller consoles can be made to customer requirements. These are ideal for moving around small schools, or transporting to other colleges & schools in the area.



The portable simulator consoles can be transported by road, and easily set-up in a few minutes.

SIMUTECH ELECTRONICS Ltd.  
1 Louis Pearlman Centre  
Goulton Street  
HULL  
HU3 4DL  
ENGLAND  
Tel - +44 1482 212961  
Email - simutechpt@gmail.com

[www.simutech-electronics.co.uk](http://www.simutech-electronics.co.uk)

# MARINE TRAINING SIMULATORS

(STCW-95 Approved)



Bridge training simulators, using real radar, sonar & echo sounder displays

Real electronic chart & ECDIS & VHF equipment can also be connected, to give students real practical knowledge

Visual views from 40 degree's - 240 degree's, showing other vessel's, buoys & coastlines. Weather conditions can be simulated

AIS & BNWAS - Included in the simulation

Affordable training systems

**SIMUTECH ELECTRONICS Ltd**

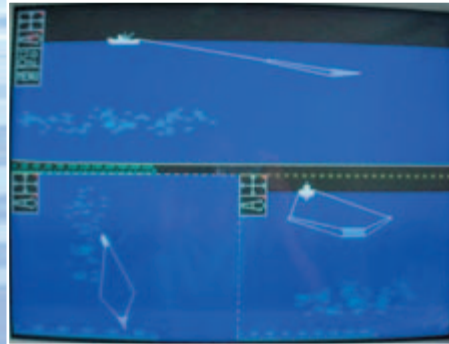
# FISHING VESSEL SIMULATOR

The simulation is designed to train fishermen, to obtain the best results from the electronic equipment and to teach various fishing methods, including, Trawling, Long-lining, Purse seining, Twin-rigging, Beam-Trawling & Bottom-seining.

Real Sonar's, Echo-sounder, Net-sounder & Radar's are used in the training console's, so students become familiar with the equipment, before going on-board vessel's.

An exercise is prepared by the instructor, in the local fishing grounds. Then the students locate the fish shoals, using the sonar & echo-sounder's.

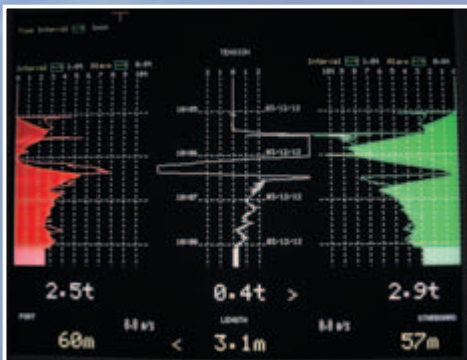
Once a shoal has been found, the students can release the fishing gear and attempt to catch the Shoal.



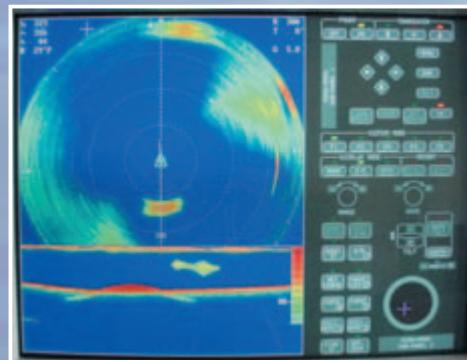
A trawl graphic display gives the student information about where their ship is, in relation to the fishing gear and the shoal of fish. This gives the students valuable information in how to understand 'net-sounders' and sonar's.



Students console in Katwijk school - Holland.



Trawl Warp Tension display



Omni direction sonar simulation



AIS view on the Navigation screen



Radar & ECDIS console

## ECDIS & Electronic chart training.

The simulator generates standard NMEA messages, which allow's the students to gain practical experience on equipment such as Electronic charts & ECDIS equipment. AIS information is also included in the messages, this can be shown on both the radar screen and the electronic chart / ECDIS.